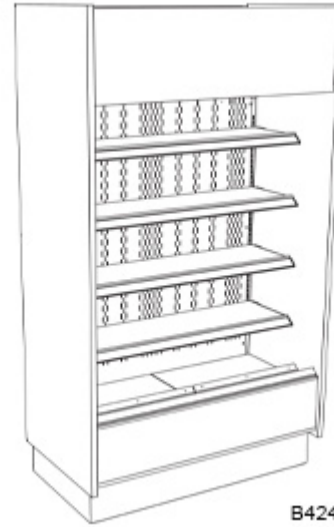


- **B424TM** 47-1/8"L x 25"D x 81-7/8"H
- **B824TM** 92-1/8"L x 25"D x 81-7/8"H

### Included

- Blue Fin coated coil
- Breeze w/EnergyWise s/c refrigeration
- Compressor air intake and discharge at top. Top of unit must remain completely open. (minimum 8" clearance above needed for compressor air discharge)
- Condensate pan (self-contained refrig. only)
- Integrated average product temperature of 40°F or less
- LED 4000K top light(s)
- One piece formed ABS plastic tub (n/a B824TM)
- One year parts & labor; 5 year compressor warranty
- Rail system for shims
- Shelving removable and adjustable on 1" centers

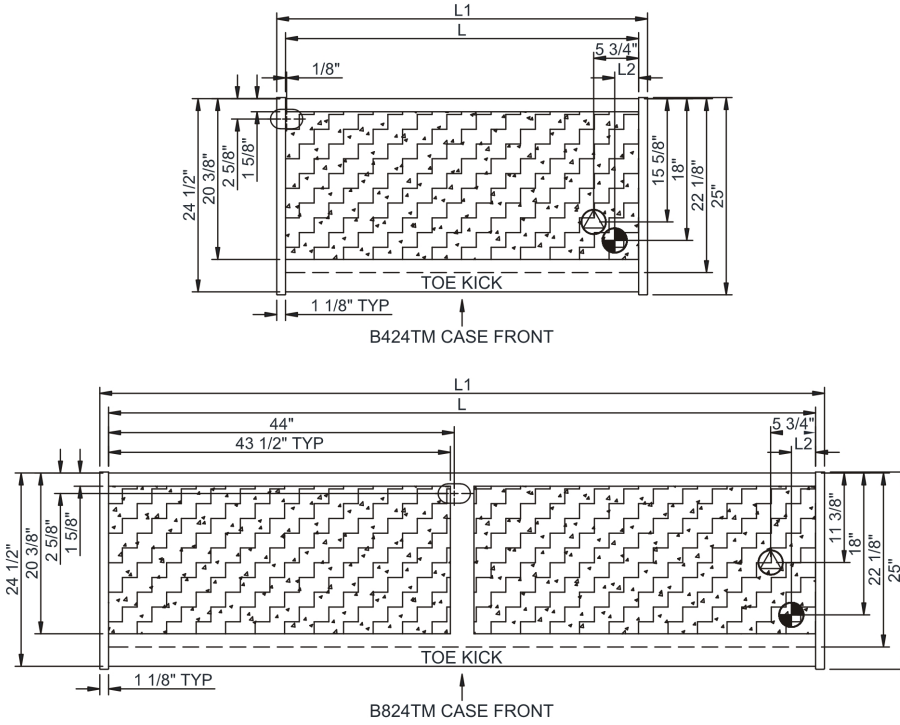


B424TM

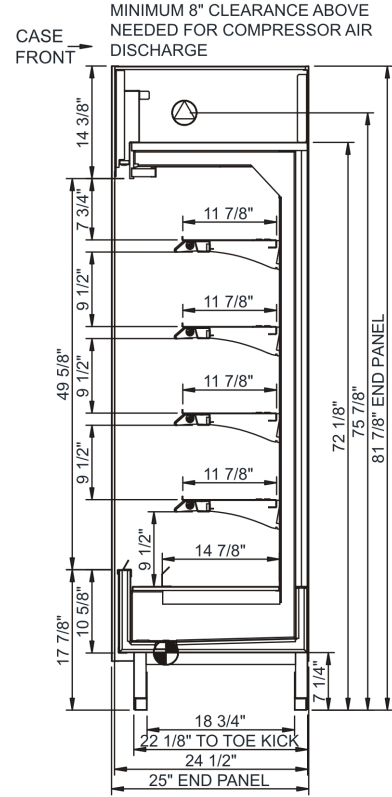
Specify	Standard Features	Additional Options
<b>EXTERIOR COLOR</b>	• Laminated (non-premium) Confirm pattern/grain direction	• Laminated (premium) Confirm pattern/grain direction • Stainless steel
<b>INTERIOR COLOR</b>	• Black	• Stainless steel
<b>LOWER FRONT PANEL COLOR</b>	• Painted - Black	• Stainless steel (w/stainless ext. only)
<b>ENDS</b>	• Full end panels w/mirror interior	
<b>REAR</b>	• Solid back panel, black	
<b>SHELVING</b>	• Metal shelves, non-lighted	• Metal shelves, lighted (LED 4000K)
<b>ELECTRICAL CONNECT</b>	• 6' Straight blade power cord (top exit)	• 6' Locking blade power cord (top exit) • Electrical leads (remote)
<b>REFRIGERATION</b>	• Breeze w/EnergyWise s/c refrigeration	• Note: Remote doesn't incl Conds unit. Floor drain reqd. • Remote w/thermostat, solenoid & TXV
<b>MISCELLANEOUS</b>		• Second year parts & labor warranty (excludes compressor)
<b>ACCESSORIES</b>		• Night curtain, retractable, non-locking • Price tag molding (matches interior color) • Removable solid security cover, locking

<b>Intended Environment:</b> Type I - Designed to operate in ambient conditions of 75°F with 55% relative humidity unless noted otherwise in system information below.		
<b>Zone</b>	<b>Intended Product To Be Displayed</b>	<b>Warmest Avg Prod Temp ° F</b>
1	Packaged refrigerated products	40

### PLAN VIEW



### SIDE VIEW



**NOTE: ALL DIMENSIONS APPROXIMATE**

-  **ELECTRICAL JUNCTION BOX**  
(SUPPLIED WITH 6" LEADS OR POWER CORD).
-  **REFRIGERATION LINE CONNECTION.**
-  **SELF-CONTAINED CASE SERVICE ACCESS AREA.**
-  **LOCATION OF DRAIN TUBE FOR REMOTE REF.**  
ONLY (SUPPLIED WITH 3/4" OR 1 1/2" PVC TUBE).
-  **REMOTE FLOOR SINK & UTILITIES ACCESS AREA.**
-  **DRY CASE SERVICE ACCESS AREA.**

### Model Technical Specifications

Model	L"	L1"	L2"	System Circuit Volts		Phs	Freq	Amps ***	Watts	Wires	NEMA Plug	SST	Conv. Rack BTUH	Para. Rack BTUH	Est Wt	
B424TM	44.88	47.13	3.00	Remote(Type I)	Circuit #1	110-120	1	60	2.00	213	2+G	Leads Multiple	20.00	6005	5560	950
				Self-Contained (R449A)	Circuit #1	208-240	1	60	10.29	2,088	2+G	6-20P or L6-20P	N/A	N/A	N/A	
B824TM	89.88	92.13	5.50	Remote(Type I)	Circuit #1	110-120	1	60	2.92	310	2+G	Leads Multiple	20.00	12378	11461	1,400
				Self-Contained (R449A)	Circuit #1	208-240	1	60	16.00	3,070	2+G	6-20P or L6-20P	N/A	N/A	N/A	

\*\*\* Does not include electric defrost on freezer models.

#### Regulatory Approvals:

All Models  
 Accordance with AHRI Std 1200  
 ETL Listed to UL 471  
 ETL Listed to CAN/CSA 22.2 No. 120  
 ETL Sanitation to NSF/ANSI 7



In Accordance with  
**AHRI Std 1200**

**DOE 2017**  
Energy Efficiency  
Compliant

#### Important Notes:

- 1) ELECTRICAL NOTE: If GFCI is required, a GFCI breaker MUST be used in lieu of a GFCI receptacle
- 2) Top of unit must remain completely open.
- 3) Performance issues (product temperatures, water on floor, etc.) caused by adverse conditions are not covered by warranty.
- 4) Keep unit at least 15' from exterior doors, overhead HVAC vents, or any air curtain disruption.
- 5) End panels must be tightly joined or kept at least 6" away from any structure to prevent condensation.
- 6) Do not expose unit to direct sunlight or any heat source (ovens, fryers, etc.).
- 7) Tile floors, low ceilings, or small rooms will increase noise level.

**⚠ WARNING:** This product can expose you to chemicals, including Urethane (Ethyl Carbamate), which are known to the State of California to cause cancer and birth defects or other reproductive harm. For more information go to [www.P65Warnings.ca.gov](http://www.P65Warnings.ca.gov).